

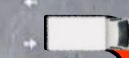
**NO PARKING**

**VENDOR PARKING**

**VENDOR PARKING**

**NO PARKING**

**Vendor Checkin**



**VENDOR PARKING**

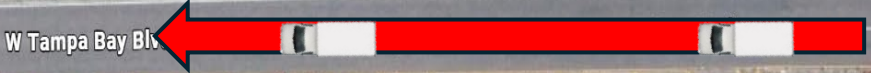
**NO PARKING**

**VENDOR SETUP AREA**

**VENDOR SETUP AREA**

**VENDOR SETUP AREA**

**NO PARKING**



W Tampa Bay Blvd

W Tampa Bay Blvd

W Tampa Bay Blvd

W Tampa Bay Blvd

W Tampa Bay Blvd

92

600

N Dale Mabry Hwy

92



# TASTE OF TAMPA FESTIVAL

## TENT VENDOR CHECK IN AND PARKING INSTRUCTIONS

1. If you are Coming from NORTH Dale Mabry Turn RIGHT onto West Tampa Bay Blvd or If you are Coming from SOUTH Dale Mabry Turn LEFT onto West Tampa Bay Blvd. Once you are on West Tampa Bay Blvd, Turn Right at the First Entrance and continue through the entrance that curves to the right until you reach the Vendor Check in Area. Once you check in with Staff, DO NOT PROCEED, wait until the TOTF Staff comes to direct you to your VENDOR setup Area. Once you reach your setup area, unload your setup items and park your vehicle in the designated Vendor Parking area. **DO NOT PARK YOUR VEHICLES IN THE SET UP AREAS , DO NOT LEAVE YOUR VEHICLE SITTING IN THE VENDOR SETUP AREA. ONLY DISPLAY VEHICLES CAN PARK THEIR VEHICLES NEXT TO THEIR VENDOR SPACE**
2. Please Adhere to your Setup time, Setup will end at 11:30 AM
3. Please do not be late to setup your vendor area, any vendors who come after 11:30 AM will not be allowed to be able to setup or participate past the designated times and there will be **NO REFUNDS** given.

If you have any questions Please contact us @ [Jolie@hrfcc.org](mailto:Jolie@hrfcc.org) or [vpadilla@hrfcc.org](mailto:vpadilla@hrfcc.org) 813-407-7191 or 813-407-6866

# TASTE OF TAMPA FESTIVAL

## FOOD TRUCK/ TRAILER VENDOR CHECK IN AND PARKING INSTRUCTIONS

1. If you are Coming from NORTH Dale Mabry Turn RIGHT onto West Tampa Bay Blvd or If you are Coming from SOUTH Dale Mabry Turn LEFT onto West Tampa Bay Blvd. Once you are on West Tampa Bay Blvd, Turn Right at the First Entrance and continue through the entrance that curves to the right until you reach the Vendor Check in Area. Once you check in with Staff, DO NOT PROCEED, wait until the TOTF Staff comes to direct you to your VENDOR setup Area. Once you reach your setup area, if you are a Food Trailer, unhitch your trailer, unload your setup items and park your vehicle in the designated Vendor Parking area. If you are a Food Truck, park in your designated area and have your staff park their vehicles in the designated Vendor Parking area **DO NOT PARK YOUR VEHICLES IN THE SET UP AREAS , DO NOT LEAVE YOUR VEHICLE SITTING IN THE VENDOR SETUP AREA.**
2. Please Adhere to your Setup time, Setup will end at 11:30 AM
3. Please do not be late to setup your vendor area, any vendors who come after 11:30 AM will not be allowed to be able to setup or participate past the designated times and there will be **NO REFUNDS** given.

If you have any questions Please contact us @ [Jolie@hrfcc.org](mailto:Jolie@hrfcc.org) or [vpadilla@hrfcc.org](mailto:vpadilla@hrfcc.org) 813-407-7191 or 813-407-6866